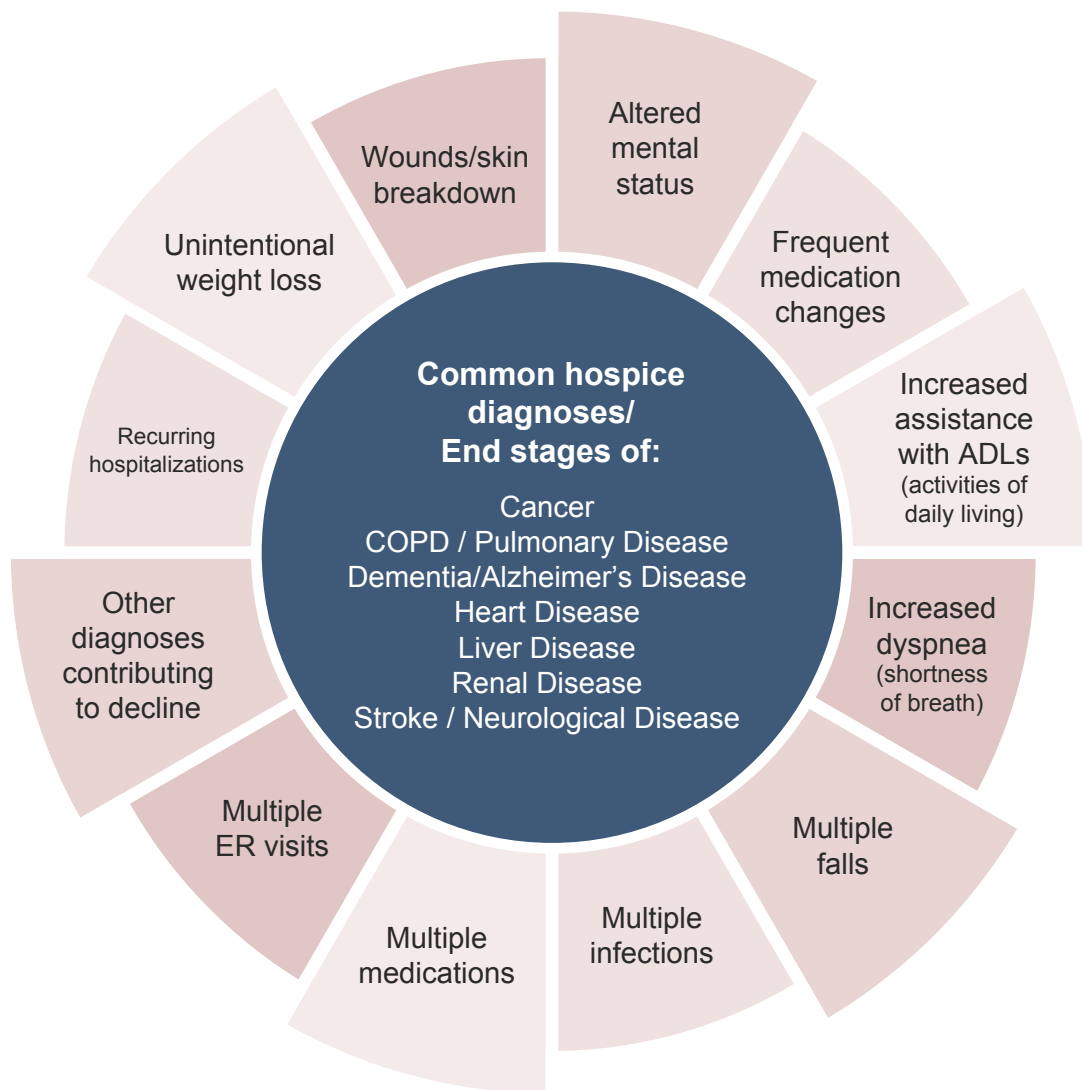


When to consider hospice care



Considering hospice care is difficult. It is important to know that hospice is not only for the last few days of life; it can be months or weeks. The earlier hospice can begin when a person is appropriate for the care, the more opportunity our team has to impact their quality of life.

Empyrean Hospice is here to help with the transition from curative treatment to comfort care. If two or more of these indicators are present, then hospice care may be appropriate.



Contact us with any questions or to make a referral for a hospice evaluation.

With Empyrean Hospice, we are family. We are committed to caring for people at end of life with the same level of dedication and compassion we would choose for our own loved ones.

[XXX-XXX-XXXX, City, State]

